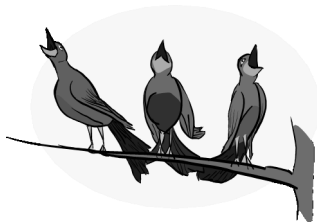


BIRDSONG

**December 2020
and
January 2021**



**BIRDINGBURY
NEWS
No 101**



Seasonal Sunshine

Photograph by Mike Coles

Birdingbury Parish Council Report

This is the last Parish Council report of this befuddling year. However, with positive vaccine news recently, it does feel as though we have reason to be optimistic for 2021. And following that optimistic theme, I am very pleased to be able to welcome Sara Kendell as our new Parish Councillor following her co-option at our November meeting. We are now back up to our full complement of five.

Thanks to everyone who responded to my call last time to register for the ‘fibre to the premises’ estimate. The form has been submitted and acknowledged, and I am waiting for the estimate to be produced. More news as I get it.

Parish Council agendas in October and November were busier than usual with a number of meaty items. We have confirmed the move of responsibility for the annual bonfire to the Club, with Chris Whatcott and Lewis Cutts leading their work. We’ve also discussed fly-tipping and footpaths, and taken a few steps to support our clerk, Jackie, with her responsibilities. This month we also discussed the annual inspection of the Playing Field equipment ... like many of us, it is showing its age ... so we have agreed some steps to slow its decline. In the next year or so we will look at a more sizeable refurb.

The other main item is one that will be of interest to the whole village, I’m sure. We have been approached by a firm called Landstrom, who are acting as agents for the Diocese of Coventry, about the Glebe Field (the large one next to the Playing Field). They are looking at new uses for the field that could provide funding for the diocese. Their initial suggestion is the provision of self-build housing plots for development that ‘may be able to subsidise new Parish facilities or green space’.

This is just a first approach and there are few details, and certainly no specifics yet regarding the shape of any final planning application, if it ever reaches that stage. Rugby BC agreed a Local Plan last year that governs development and it clearly states that Birdingbury is a ‘Rural Village’ where development is limited to within the settlement boundary. The Glebe Field is outside this boundary which means that exceptions to this ‘no development’ rule are very limited, such as affordable housing schemes to meet proven local need. Planning rules are rarely crystal clear, but this feels like a high hurdle for this proposal to cross unless it changes substantially.

Landstrom are interested in the types of subsidy or support that the village might be interested in and they have said that they’ll set up a website to share more information and possibly move towards a village survey. As a Parish Council we will be “ultra cautious” (as one Councillor put it) about the Glebe Field proposal. We will reiterate the provisions of the Local Plan. However, there is the risk that if we don’t engage at all, proposals could be discussed in Rugby without a local voice. So, we agreed three actions:

- To ensure that parishioners are aware of the proposal
- To actively listen to the thoughts and concerns that parishioners will have
- To ask Landstrom for more details in terms of the scheme, timescales and how they plan to communicate with residents.

If, and when, more details emerge, we will share them on the village website and Facebook group, and please look occasionally at the Parish Council noticeboard on the back of the bus shelter. And please do contact any of the Councillors, or our clerk (parishclerk@birdingbury.org), with your thoughts.

I'd also like to thank Karen and everyone else involved in the service on Remembrance Sunday. Bill's reading of the Kohima Epitaph was very touching, as was the two minutes silence. The sight of everyone standing in socially distanced family groups, and yet together, is one that seemed to summarise life in 2020 ... distanced but still together.

I hope that you will be able to see the ones you love over the festive season and I'd like to wish you all a merry Christmas and happy New Year.

Guy French, Chair, Parish Council

IRDSONGBIRDSONGBIRDSONG

Santa Claus Visiting Arrangements: Advice for Birdingbury

- Provide your list early – all visits must be pre-recorded on Santa's passenger locator form required for entry to UK.
- Place gift stocking on the outside of your chimney at roof level as he cannot come in. The chimney should only be accessed by means of professionally erected scaffolding, apparently readily available in the village.
- If the stocking cannot be placed outside (see Covid Legcovering Anchorage Unavailable Statute, para 359 s/section 12.05) then inhabitants should wear face masks and go to sleep to prevent ~~recognition~~ infection.
- Remember to turn off all Bluetooth – this is to create an acceptable interface with test and trace systems. Reindeer navigation may also be affected.
- Sanitisation – alcohol works very well. The traditional sherry should be provided.
- Rugby Borough Council has adopted a policy of being carbon neutral by 2030. Arrival is not expected before 2300.

By Order of SLEIGH

(Santa's Little Elves Implementing Gift Handouts VLtd. Registered in Lapland)

Remembrance Sunday

What wonderful support Birdingbury gave for the Memorial Service, led by Karen at the cross on Sunday 8th November. It was such a lovely atmosphere, especially enhanced by the wonderful young musician from Bilton Silver Band. Imogen gave, I thought, very moving and poignant playing of the Bugle Calls, which resounded around the village. Well done to Bill, who once again called out the names in memoriam, and to everyone who organised or read verse and prayers.

I'm delighted to say you all gave so generously the sum of £420, which has now been donated to the Royal British Legion. Thank you Birdingbury

Daphne Chippendale



Remembrance

Like Christ, they gave their lives for us
And we remember them.
In countries spread throughout the globe
We honour now the dead.
The sacrifice they made for us, must never be in vain
Through Christ, our hope is, that this great loss
Will turn to greater gain.

From Calvary, His sacrifice echoes throughout the years.
With confidence we look to Him, whose love casts out all fear.
With faith and hope we now embrace the love
To which He calls
To serve and love all humankind
For His love is for all.

Bryan Tompkins



Defibrillator Update

How time flies! It's been nearly two years since the defibrillator in the phone box was commissioned. Luckily, it has only been called for once since then (although not required) and, possibly, it has been slightly forgotten. Mark Thomas and I have been regularly checking the equipment since installation and it is ready to go should it be needed. I have also recently cleaned the phone box to remove general dirt, cobwebs etc and cleaned down all surfaces with antibacterial wipes, and this will continue at future checks.

However, we now have the complication of coronavirus to deal with and I have been in touch with Community Heartbeat to see how this affects our potential use of the equipment.

We are advised to use the defibrillator in an emergency, subject to the following slight change in procedure. Essentially, it is that we should not currently use rescue breaths (ie mouth-to-mouth resuscitation).

If you witness a cardiac arrest, its crucial to call 999 and start CPR (cardiopulmonary resuscitation) immediately.

Due to the current coronavirus outbreak, there are several important changes to CPR that the Resuscitation Council UK advise. If you find someone unconscious, please follow these simple steps:

- Step 1 Shake the victim to establish consciousness and shout for help - do not leave the victim.
- Step 2 Call 999 and ask someone to fetch the defibrillator from the phone box. The ambulance service will give you the access code to the defibrillator box. If you live in the village, please make yourself familiar with the code and have it available at all times. Please contact me if you need a reminder of the code.
- Step 3 Don't put your face close to the victim. If you think there is a risk of infection, use a towel or a piece of clothing and lay it over their mouth and nose. I have placed a single use face mask in a sterile bag in with the defib for anyone to use should they so wish but this is not, I must stress not, Community Heartbeat advice.
- Step 4 Give chest compressions only - do not give rescue breaths.
- Step 5 Continue CPR until an ambulance arrives.
- Step 6 After the ambulance crew have taken over, wash your hands thoroughly with soap and water or use an alcohol-based hand gel.

I am aware that we have a number of new villagers who have arrived since the defibrillator was installed and who might not know about it, so I will endeavour to contact all our new people in the next couple of weeks to update them on the its operation, and to hand out information sheets and fridge magnets.

In the meantime, I hope you find this update useful and let's hope we don't need the defibrillator. Please feel free to contact me for more information and / or a reminder of the access code. Please feel free to give me a call (07964870069 / 01926 719039), drop me an email (steveedgar@sky.com), or knock on our door (Rose Cottage, 26 Main Street) and stand back.

Steve Edgar

IRDSONGBIRDSONGBIRDSONG

LH Academy Update

We are having a very busy term at Leamington Hastings Academy! We've donated items to Rugby Food Bank as part of our Harvest Festival celebration, held a special RE day to celebrate the Jewish festival of Sukkot, held an afternoon tea for the children to raise money for Macmillan, and celebrated that we are all unique by wearing odd socks for kindness week! Since we couldn't invite parents to join in with our Harvest celebration, we filmed it and sent it home to parents, who enjoyed hearing our songs.

In Key Stage One (Years One and Two), the children have learnt about Africa and are now currently learning about Victorians. Although Covid halted plans to visit a museum to take part in a Victorian school room experience, we were lucky that the children were able to take part in a live video session from the museum with a Victorian school teacher, whilst the children were dressed as Victorian school children. Although the morning was enjoyable, the children decided that modern schooling is much more fun!

In the Early Years Foundation Stage (Nursery and Reception), the children are currently enjoying their topic based around 'Superheroes'! When the children arrived at school on the first day of their topic, they were met with real life superheroes who shared their special powers. The children have enjoyed writing stories, creating masks, using construction to make traps and much more!

Although Christmas will be a different experience in school this year, we still have lots of exciting events planned: we can't wait to tell you all about them! We are currently exploring options for markings to be painted on our freshly tarmacked playground. A huge thank you to everyone in the local community who has supported us with this project. We'd also like to say thank you to Reverend Anne who has worked alongside the school ever since her arrival, with the children enjoying visits from Anne, both at school and in the church. We wish Anne well as she retires and moves into the next phase of her life. Goodbye Anne, we will miss you!

Suzanne Marson, Head of School, Leamington Hastings Church of England Academy

Open House at Birdingbury Club



In October a number of us began going to the Club twice a week for socially distanced company, coffee, cakes, soup and a good old chat. A new coffee machine was purchased so we could have cappuccinos, lattes: whatever took our fancy. Cakes and snacks were all homemade and donated, not to mention delicious. Karen Armbrister, as front of house, made all the arrangements and Karen Thomas dispensed orders efficiently from behind the bar.

Some of us had a go at waitressing, trying desperately to remember what had been ordered and finally reverting to pen and paper.



Customers were welcome to bring their laptops so they could carry on with their work.



Helena the PCSO made it her base when she made her

visit to the village and Aileen held a plant stall outside to raise money for Hope4.



It was all going so well..... then came Lockdown 2.

Hopefully, we will be able to pick up where we left off in a few weeks.

So, thank you to both Karens for your efforts so far, to the Club Committee for allowing us to use the facilities during the day, and to Mark for opening the Club and checking all ran smoothly.

Barbara Sweet



Thank You from Hope4

I am sure that others will have written elsewhere on the success of the Monday and Thursday Community Drop-In sessions at the Club, but on behalf of Hope 4 Rugby I wanted to thank Dick and Aileen for organising, and all who made contributions to their plant sale. There must have been some very exotic and expensive plants purchased with some very significant donations: in all £318 was donated.

It has been a difficult ten months for us at the Charity, with Lockdown presenting many challenges. All that said, I am pleased to report that all our homeless clients, who want one, have a roof over their heads and though we are not able to provide lunches at the Centre, we are meeting clients by appointment and are being very successful in helping them make positive progress. The challenge however is great: we have had 37 new clients referred to us in the past six months, in the whole of last year we only had 34 new referrals.



We will be unable to open the Rugby Winter Shelter this year as a result of Covid restrictions but the 'everyone in' initiative should ensure that no one is left on the streets. We are hoping to provide meals to some clients who have 'no recourse to public funds'.

Finally, we are working very hard at the Foodbank and so many have been generous with donations of both money and food. Each week we are distributing more food packages to those in need: these are difficult times.

Once again, many thanks to all for their generosity.

Andrew Armbrister, Treasurer, Hope 4 Rugby

IRDSONGBIRDSONGBIRDSONG

Art Exhibition

Myton Hospice benefitted by £340, raised during the garage art weekend at Broadway in October. Despite the weather, visitors, in twos and threes, enjoyed and bought some of the varied 49 paintings by four talented local artists. Many lovely hand-made cards, preserves, all the delicious cakes (!) and the beautiful floral displays were sold.

A big 'thank you' to all who took part in this colourful event.

Janet Kent



IRDSONGBIRDSONGBIRDSONG

Halloween Horrors, 2020 Style!

We said we would make Halloween happen in Birdingbury. We said we would do it differently. Guess what? We did!

Thanks so much to everyone who got involved - another great team effort! We had so many donations of sweets and chocolate that we needed a really big cauldron, and we loved all the fabulous decorations on houses and in gardens. Great support from the Club and the Birbury too! We've sent out our revolting roving reporter to gather some freaky feedback on the ghostly going-ons...

‘Awesome. Just Awesome. Can we do it like this every year, just without social distancing?’

Molly Wilson, Age 8

‘I was so excited this year as we’ve been away the last couple of years. It was a very good night and we all really enjoyed it. I think it was the best we ever had in Birdingbury, so thank you to Lesley for all her hard work and can’t wait to see what she will do next year.’

Sophie Dent, Age 9

‘Halloween was very spooky this year. I know it wasn’t what we usually do but it was a nice change. I particularly liked working out the clues although my little sister hogged the glory of solving them before me!’

Lexie Thomlinson, Age 12

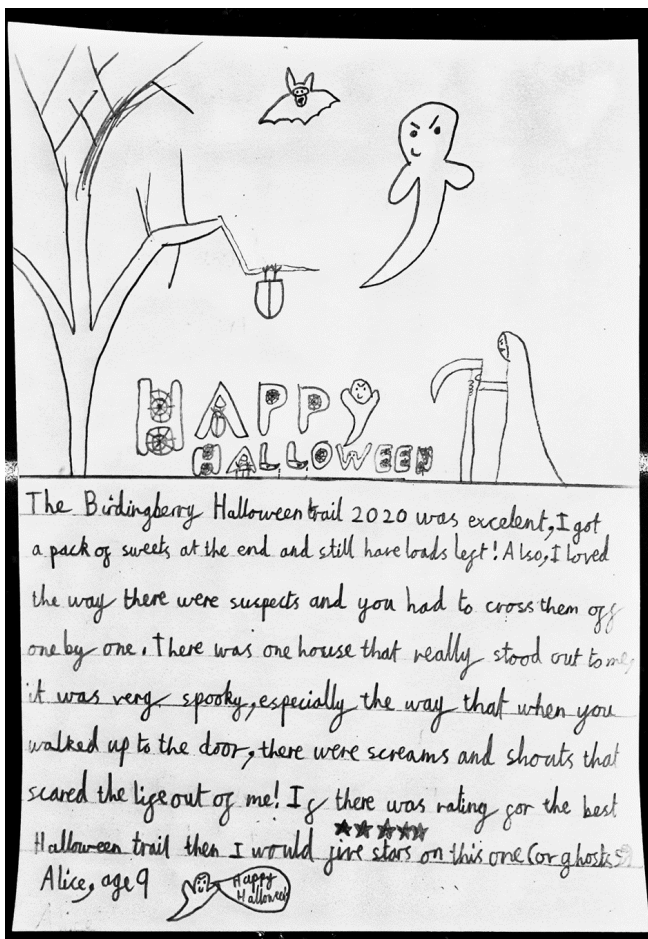
‘It was a very spooky night and the clues were well hidden. It was very fun and I think we should do it every Halloween because you get bags stuffed with treats.’

Kara Thomlinson, Age 9

As Head Witch, it was great to see the kids have such a ghoulishly good time on our terrifying trail. I’m just slightly concerned that I’ve given myself a chilling challenge for future years by raising eerie expectations...eek!

Tabitha Thomlinson, Age Frightening





Halloween Trail

A huge thank you to Tabitha the Witch (aka Lesley Thomlinson) for arranging the Halloween Trail in place of the usual trick & treat party at the Club this Halloween. In keeping with government guidelines, family groups took part in a spooky trail, returning to the Club to pick up specially prepared treat bags.

Thanks to all those villagers who hosted clues and decorated houses for the trail and who donated all the treats. Thanks also to those who participated in a portion of Zelda's Chilli later that evening in return for a donation: £25 was given to the British Legion Poppy Fund as a result.

Karen Thomas

Lockdown Two

They say that in the movies the sequel's never as good
Same old storyline and actors, plot as clear as mud
Wait until the DVD or Netflix pay to view
So, bear with me, Barry Norman, as I review Lockdown Two.

In Lockdown One I learned to bake and how to wash my hands,
I couldn't go out to play or sing or even watch the bands.
I squinted at the laptop screen while keeping up with zoom
And welcomed Countdown, Bingo and Tipton's quiz into the room.

Spent far too long on Facebook, deciding who to blame
When all along the virus just wouldn't play the game.
Missed visiting the family and a cheeky one down the pub,
But loved the Coventry bitter in milk bottles from the club.

We clapped on Thursdays for the NHS and smiled at Rich and Freddie
And all the village needs were met - always someone ready.
Getting a prescription or pint of milk was really quite a mission,
But we saw how beautiful this village is in the photo competition.

And so, we come to Lockdown Two and remember Lockdown One,
And remember those who's Covid life has not been so much fun.
The zoom has started zooming again, it's messing with my head,
No longer apple pie and tarts, now I'm baking bread!

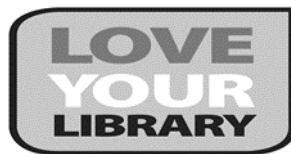
With flour that's two years out of date and yeast that's nearly dead,
Is all that kneading effort worth getting out of bed?
Let's hope the vaccine sets us free
And I won't be writing about Lockdown Three

Steve Edgar

Warwickshire's Digital Library

In the absence of our much loved mobile library, have a look some of the things you can do online with Warwickshire libraries:

- Download eBooks & eAudio to your smartphone, tablet, pc or laptop.
- Download eMagazines and eNewspapers to your smartphone, tablet, pc or laptop.
- Listen to classical music in the *Naxos Music Library*.
- Search various encyclopaedias, dictionaries and other useful reference sources like the *Times Digital Archive* and *Encyclopaedia Britannica*.



...and all for free with a current Warwickshire library card!

If you haven't got one you can join online straightaway at:

www.warwickshire.gov.uk/jointhelibrary

Then visit our website to learn more about all the resources we provide at:

www.warwickshire.gov.uk/libraries

...and if you need help using our Digital Library services, email us at:

libraryenquiryteam@warwickshire.gov.uk and we'll get you started.

We also run online events; author appearances, a reading group, story and craft sessions which you can look out for and book free tickets at: <https://bit.ly/330rFaC>

Alternatively, you can still use the Mobile Library Select and Collect service:

A reduced Mobile Library Service is currently in operation. Staff can select up to 4 books per customer to be collected from over 150 designated locations around Warwickshire.

To arrange a collection of books, please contact the Mobile Library Team on 01926 851031 or mobilelibraryservice@warwickshire.gov.uk.

via Jasmine Coles

IRDSONGBIRDSONGBIRDSONG

Birdingbury knows

Days grow short, leaves turn and fall

Winter warmth inside

Thin Jethro Laskey



Pete Dent's Funeral



The family cannot thank everyone enough for standing on Main Street in such poor weather conditions and paying their respect to our Dad, Denty. It was an unusual cortege: we did what he wanted, and we gave him the best funeral we could in these uncertain times. A huge thank you from all of us, as it meant the world to us.



Thank you to everyone who sent cards, flowers and messages.

We are trying to raise money for a charity close to Dad's heart. It is the Wallace and Gromit Grand Appeal on behalf of Bristol Children's Hospital, where Josh, his grandson, has been treated on many occasions. If you able to donate, please go to the Just Giving page: <https://www.justgiving.com/remember/812243/Pete-Dent>.

You can find out more about the charity on its website: <https://www.grandappeal.org.uk>

So far, we have raised £1,300.00 and I am trying to achieve our target of £2,000.00. Please dig deep. We would appreciate that for the children's hospital. Thank you.

Mark Dent

IRDSONGBIRDSONGBIRDSONG

Cancer Appeal



We would like to thank everyone in Marton and Birdingbury for their donations to the Cancer Appeal held in place of the usual annual Marton fundraising event.

As a result of everyone's generosity, we were able to raise £1,100 which will be split equally between breast and prostate cancer research charities.

Mary Harrison and Helen Keeves



IRDSONGBIRDSONGBIRDSONG

Tree Planting

We have all read and heard how important trees are to our natural world: indeed, just today our Prime Minister had stated that more trees must be planted, and rewilding should take place.

Here at Bondon Farm, we intend to do our bit by planting five acres of woodland this winter, in two areas. The first area will be in the top west corner of the field where the footpath runs up the hill to Frankton, directly in front as you pass under the viaduct.

We would like to offer the local community the opportunity to plant some of the trees. As the wood matures it will be very visible from the road and footpath and may give satisfaction, particularly to young folk, to know that they had a hand in creating the woodland (honestly, we are not looking for cheap labour - we have a team here at Bondon that will plant them!!).

We are indebted to Warwickshire Wildlife for their help in this project as part of the Dunsmore Living Landscape. The trees, which are native hardwoods, will arrive in the second week of December with the intention of planting being complete by the end of the month.

We would be delighted if the local community would like to be part of this project. Sadly, due to corona and the restrictions, it perhaps won't be the event we were hoping it would be however we intend to do it in the safest way possible for all concerned. It would really help us to know how many would be interested in taking part, so in the first instance could we ask you to email us to 'register your interest'. We can then coordinate the planting in the safest way possible within the restrictions. So, if you want to have some time out in the fresh air, enjoying some of the best views of Warwickshire and giving a bit back to nature then please get in touch! All you will need is your wellies and a spade.

We are still in the planning stage of the second area, but we hope to plant that in the New Year. It will be called the Nursery and will be between the railway line and the river. There was an ancient woodland on the proposed site up until about seventy years ago before it was cleared for agricultural production. There is still a remnant of this woodland with 15 magnificent mature oak trees on the edge of the hedge. It will be good to restore this area to woodland and use its old name. We have an old map showing the extent of the wood so are able to use it for reference in the development of the new site. We'll keep you posted on progress.

If you'd like to join in, please get in touch with us bondonfarm@btinternet.com

The McCurdies



A Local Walk: Ladbroke

In recent months we have been enjoying short walks around local villages: Willoughby, Braunston and Long Itchington come to mind. Our latest exploration was around Ladbroke, just south of Southam on the Banbury Road and fewer than 7 miles from Birdingbury.



The village was bypassed in 1985 and therefore easily missed unless turning off the main road. So, inspired by Dick Withington's article on his walk to Frankton and back during lockdown one in a previous Birdsong, and armed with my OS Landranger number 151, we turned into the village from the A423 at the northern access and parked by the old forge.

This lovely walk is about one mile long but can be extended with reference to the relevant OS map.

From the old forge, walk towards the village for about 150 metres until reaching a sharp left turn with a children's park visible ahead. To the right is the drive to Ladbroke House but we need to follow the footpath straight ahead past the children's play area and onwards to a small wildflower meadow and a bridge over a stream. After crossing the stream into the field, the path crosses an old ridge between two ancient fishponds and heads straight on towards the church, where a gate takes you into the church yard. A manor house once stood in the field you are now crossing and the landscape all around is of parkland with very many trees.

Exit the churchyard through the lych gate and turn left, noting on the right the Old Rectory and, across the road, Old Hall Farm. Follow the road around to the left back towards the village with Ladbroke Hall, now residential apartments, on the right. After crossing the stream again, turn right into Bridge Lane and follow it up to the main street. To the right, the road heads off to rejoin the bypass: this would have been the main road prior to 1985 as I'm sure some people would remember. Also, to the right is the Bell Inn, the only pub left in Ladbroke but unfortunately, closed due to lockdown on our visit.

We turn left here, however, and head back down the main street to the car, past lovely old cottages and converted farms.

Ladbroke is a village full of history with associations to the Catesby Spencer and Dudley families. The layout of the village has changed remarkably little since the Domesday Book and makes a lovely short walk. They say that the turf accountant firm of 'Ladbrokes' was founded by a certain Arthur Bender, who was a groom at Ladbroke House 100 years ago, but we wouldn't like to bet on it!

Steve and Venice Edgar

More Local Walks: Variations from your Front Door

Walk to the former Birdingbury station and join the old railway towards Draycote.

Route 1. Leave the disused railway line and turn right onto the Bourton-Draycote lane. After about 100m take the footpath on the right. Basically, the path runs parallel to the rail track. After walking across a long and sometimes muddy field, cross a footbridge over a small stream. The footpath now crosses the drive up to Draycote Hill Farm. On your left you may glimpse a small pond which often has mallard and moorhens in the winter months. The stile back onto the private drive is a little tricky. Now re-join the road by the river bridge back into the village. (About 1¼ hours)

Route 2. The same start as route 1 but continue along the disused railway line and come off at the next bridge, turning right onto the other road to Draycote. After about 100m, take the path on the left through Draycote Meadows reserve. Leave at the right corner of the first field and walk up the muddy track, into a field keeping to the left side, to join a road track across the golf course. The road into Thurlaston becomes metalled with houses either side. Look for a house on the left named Broadclose. Immediately opposite is a footpath that heads downhill into a lovely small valley. At the lowest point on the right side is a brick lined feature which must have been part of a drainage system. Climb uphill, keeping close to the fence on your left. You will pass Thurlaston Meadows Care Home. Turn left and walk past the Pudding Bag Lane junction. (Why is it so named?) Turn right into Church Lane. When you see St Edmund's Church, continue along a footpath down to the Draycote Reservoir perimeter road. Turn right and after about 20 minutes you will see a concrete footpath lined both sides with tubular metal railings. At the bottom, close to the reservoir, is the main water feed point into the reservoir. Water is pumped up from Eathorpe in the winter to fill it up. All the minor streams in the valley were diverted away from Draycote Water. Just past the 'Butterflies of Draycote Water' board take the Route 41 track down to Draycote village. Follow the Bourton road out of the village, turning left onto the footpath described in Route 1. (About 2¼ hours)

Route 3. If you are feeling energetic, continue along the road up the hill to Bourton. There is a seat at the top with great views over Draycote Water. You can now walk through Bourton churchyard, cutting off the corner. Walk into Bourton passing Bourton Hall Wedding Venue. Look for a footpath sign on your left which is also a shared access to houses 14 to 17. This narrow path turns right onto Shuckburgh Crescent where you join the road towards Frankton. Look for the second footpath on your left which is only marked by a dog poo bin. Follow this path behind the houses and turn left onto the road back to Birdingbury. As the road descends steeply there is a lovely view across the site of the former POW camp. Turn right at the junction, back home for a well-earned cuppa and maybe slice of cake. (Just over 3 hours)

Happy walking.

Dick Withington

What did you do in the 2020 lockdown, Grandad?

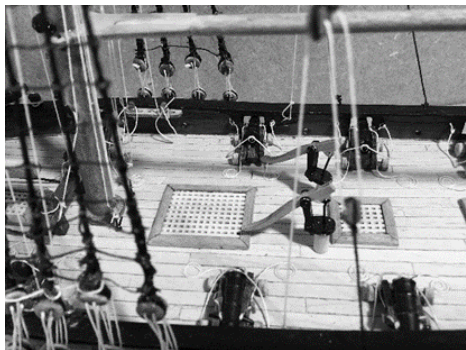
Well it all actually started back in 2003 when I was living away during the week, working on Humberside. I felt I needed to do something in the winter evenings – there are only so many times one can go to the gym. I decided to buy and build from a kit a wooden model of an 18th century warship, having admired these things in maritime museums (but not in the unfortunate position like French prisoners-of-war to have to make them from chicken bones and other kitchen scraps).

I never got started but carried on with good intentions to do it - sometime. Each year I would get the box out, open the drawings, and look at how comprehensive, and difficult, they seemed to be – and put it all back again.

17 years later, after enough of 1000 piece jigsaws and with the prospect of a possibly long lockdown, I decided to try once again – and stuck to it (sometimes literally) until finishing in October. Rather like the jigsaws it was a matter of breaking the project down to each component small section and just getting that completed – which can take ages, but gives great satisfaction at the time.

The boat building started with the planking of the hull frame – thin 4mm wide strips of wood, cut to appropriate (researched) scale size, and each chamfered to fit the curves of the vessel. These are then pinned and glued to the frame – twice, as there are two “skins”. A herculean task for me – a man with short stubby fingers, never going to play a violin, and not normally with the greatest dexterity, patience or temper. Not only was half my time spent extricating those fingers from the quick setting glue, but the other half crawling on the floor to retrieve the pins that inevitably fell out of the pin pusher tool (an Italian device, so perhaps I should have expected it – can I say that?). At this stage my wife felt that the ship should be re-named ‘HMS Expletive’.

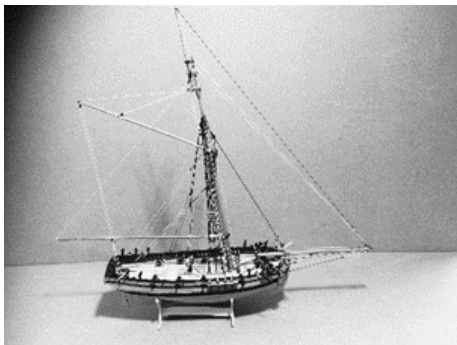
The task then moved on to more varied areas – the decking, planking again to scale and pattern; the cannons made from each of their individual parts, and (again with research) the appropriate rope tackle for running them in and out; anchors, pumps, winches.



Finally, on to the masts, yards and rigging – again all to correct detail. Once again I found myself crawling on the floor to find the small rigging blocks – no larger than the head of a match – which inevitably popped out of the tweezers needed to hold them (stubby fingers again), shot to a general direction only identified by sound, but camouflaged against the wooden floor, or on to cushions, curtains and other materials.

I tried very hard to tie the knots as shown on these blocks but in the end found that superglue worked wonders to do the job – again learning to keep my fingers away.

And so it is finished - HM Cutter Sherbourne 1863. It must have been a formidable little ship with the amount of sail area it had, and the armament – they could do with something like that in the Channel today. It has been a bit like running the marathon. The immediate reaction on finishing is ‘never again’, but gradually one starts thinking that ‘next time’ one could do a bit better and having learned one’s lesson, it might be easier. So I have bought another kit! Bigger! The question now is whether I do it – or will it be in a drawer for another 17 years?



David Preston

IRDSONGBIRDSONGBIRDSONG

Lockdown Jammers Back at the Club

Following a risk assessment by Tony Flint and myself in early October, it was decided to restart Jammers on Wednesday evenings, subject to the conditions necessary to comply with Covid rules being met. These mostly consisted of common-sense precautions such as seating two metres apart, hand sanitation as in the rest of the club, track and trace booking in, and no sharing of instruments etc. The number of people allowed in the room was a strictly maximum of six. It was frustrating, and I know at times we had to ask people not to enter the room while the band were playing, but I can only apologise and stress that this was necessary to allow us to continue.

Well, we managed three weeks before lockdown two hit us, so back to the drawing board.

I want to thank all at the Club for enthusiastically making this happen and look forward to reassessing and starting again when circumstances allow.

Rock on boys and girls

Steve Edgar



IRDSONGBIRDSONGBIRDSONG

Pawprints Pup-date

Over the last few months, we have kept you up to date with our efforts in Birdingbury, raising funds for Pawprints Dog Rescue during a very difficult time when none of the usual fundraising activities were possible. Now we are able to show you how important your generosity has been to the charity.

Anita Twigger, the Founder of Pawprints Dog Rescue, has sent us the following report of their activities during Lockdown:

Since the week before Lockdown, we have helped 83 dogs in total. Some of these were with us for respite care – for owners who were hospitalised or needing to flee domestic violence situations but unable (or more often, unwilling) to flee with their dog(s).

Sadly, some of these dogs were then rehomed by us due to owners passing.

Additionally, we had 2 dogs in palliative foster care during this time, which we have fully supported with food, medication etc.

We've had major operations to cover from entropion to tumours on 7 dogs, in addition to 42 standard ops for spays/castrates.

81 dogs were vaccinated.

85 dogs were flead and wormed throughout this period.

We have also helped 7 ex-racing greyhounds who had all been injured on the track, 4 with fractures to their legs.

We were the only rescue centre that covers Warwickshire to stay open for intake during Lockdown. When others closed their doors, we widened our doorways – we had dogs transported to us by dog wardens from all over the West Midlands, Worcestershire and Oxfordshire. Our usual remit of 12 kennels, quickly became 36 during early May as we were unable to rehome dogs. As soon as DEFRA gave us the go-ahead to transport dogs to homes, we conducted interviews and home checks virtually, before meeting owners in their own gardens and arranging foster-to-adopt contracts. After 2 weeks, if all parties were satisfied the dog was happy and settled, adoption was completed.

We have had 62 dogs adopted during this time. To find out more visit our website: www.pawprintsdogrescue.org

Anita Twigger, Head of Operations, Pawprints Dog Rescue, Registered Charity 1190250

This is why we have begged, borrowed (and maybe stolen) your generous donations of money and items to sell.

Thank you so very much. Our efforts continue.....

Chris Kilvington and Barbara Sweet

A Brief Pageant of English Verse

This topical verse was spotted in Slightly Foxed magazine and submitted to Birdsong by both Chris Barney and Janet Kent

I won't arise and go now, and go to Innisfree,
I'll sanitize the doorknob and make a cup of tea.
I won't go down to the sea again; I won't go out at all,
I'll wander lonely as a cloud from the kitchen to the hall.

There's a green-eyed yellow monster to the north of Kathmandu
But I shan't be seeing him just yet and nor, I think, will you.
While the dawn comes up like thunder on the road to Mandalay
I'll make my bit of supper and eat it off a tray.

I shall not speed my bonnie boat across the sea to Skye
Or take the rolling English road from Birmingham to Rye.
About the woodland, just right now, I am not free to go
To see the Keep Out posters or the cherry hung with snow,

And no, I won't be travelling much, within the realms of gold,
Or get me to Milford Haven. All that's been put on hold.
Give me your hands, I shan't request, albeit we are friends
Nor come within a mile of you, until this trial ends.

Anon

IRDSONGBIRDSONGBIRDSONG

Birdingbury Allotment Association

We have a plot available for immediate occupation. Good hobby, especially during lockdown, and the exercise is cheaper than paying a gym subscription.

Can provide lots of fresh vegetables too!

Size approx 300 square yards. Rental £10.00 per year

For further information please contact me on 01926 632666

Vic Shayler



Social Media Update



As we have recently made a few changes to the Birdingbury Facebook pages, I thought it would be useful to update everyone. These changes were made primarily in response to several villagers who had expressed concern that the original page had been opened up to local businesses/services, people living in nearby villages and those who only worked periodically in the village. It was felt that information may be being disseminated inappropriately.

After consultation on the Birdingbury Facebook page and the Village Chat Whatsapp group, it was decided to realign the Facebook presence as follows:

Birdingbury Village Facebook page

This is for villagers to share details of local social, community and charity events, as well as Birdingbury news, gossip, lost/found, get-togethers, concerns, photos, videos etc.

In order to keep the page safe and troll free, we will be asking potential members a few questions which the admin team will screen before accepting any new members to join the group. This may also involve asking another villager to confirm who you are.

Birdingbury Business and Services Facebook page

This is a renaming of the original Birdingbury Village Facebook page and has a similar remit to the Village page, plus we are happy for local businesses to promote their services here and for individuals in neighbouring villages to be members too. The admin team will still screen all new members. All the old posts can be found on this site.

Jill Drew is the administrator and Jo Cutts, Lesley Thomlinson, Paula Taylor and Jackie Morton are moderators for both Facebook pages. To join either, contact Paula at paula.taylo@btinternet.com or go to the page and ask to join.

War on Waste Birdingbury, Marton, Frankton, Bourton on Dunsmore Facebook page

Somewhere to offer free or moderate value pre-loved goods to local people (primarily from the named villages). Wanted posts can be added as well. To join this group, find the group on Facebook, ask to join and answer all the membership questions.

St Leonard's Church, Birdingbury Facebook page

This is the place to go for matters relating to the church community. To join this group, contact the administrator Karen Armbrister at karen.armbrister@btinternet.com

Birdingbury Village Club Facebook page

This is the place to go for matters relating to the Club, including information about opening times, social events and food/drinks services, including pre-ordering, takeaway times and menus. Just search for the relevant page and like it to receive posts.

In addition to the Facebook pages, there are two village WhatsApp groups:



Village Chat: this is a general social group where members can share news, stories, humour and relevant community information informally with each other. Paula Taylor is the administrator for this group – contact her as above to join.

Birdingbury Support Group: this group is dedicated to matching requests for help with volunteers, particularly in relation to lockdown. Karen Armbrister is the administrator for this group - contact her as above.

If you have not already done so, you will need to set up a Facebook account and to download the WhatsApp app to your mobile phone to access these channels.

I hope this update helps and we can all look forward to our social media continuing to be used responsibly, and provide help, support and a bit of fun for us all at this difficult time.

Jill Drew

IRDSONGBIRDSONGBIRDSONG

Bowls Club News

Unfortunately, as with so many other activities, Leamington Hastings Bowls Club were not able to play friendly matches against other local clubs this season. Instead, we are having to be content with Wednesday evening roll ups and inter club matches, all played within social distancing guidelines and lots of sanitising routines. Well done to everyone that took part and congratulations to the worthy winners.

We also held the annual Lyle Watts Day raising £220: since it began in 1990, the total amount raised for Myton Hospice is £13,088.

The upkeep of the bowls green continues with scarifying, mowing, seed sowing and kind words offered up to the patron saint of bowling greens for favourable weather.

The indoor season has also been cancelled for 2020 but we keep our fingers crossed for 2021 (difficult to bowl that way), and hope that we can all return safe and well.

As we are unable to hold our annual Christmas dinner and awards presentation, I know if we were all together, we would be wishing each other a happy, healthy and safe Christmas and New Year.

Susan Turner

Teams 4u

Hello, everyone, just to say many, many thank yous to everyone who has helped to wrap boxes and supply goodies for the Shoe Box scheme. I'm delighted to report that the Stretton Group (which includes Birdingbury) has dispatched 2,809 boxes of gifts to disadvantaged children in Romania and the Danube Delta.



Once again you have been so generous, and your donations are a delight to receive. So many lovely hand knitted items, Teddy Bears, finger puppets, scarves, pompom hats and mittens. As well as supplies of soaps, tooth paste and brushes, shampoo, hairbrushes and combs, pens, pencils and supplies of drawing and writing paper, small toy cars, puzzle games, and sweets. So many lovely things: you are very generous, Birdingbury.

At the moment, we have stopped wrapping boxes, at least until after Christmas (obviously time off for wrapping your own prezzies).

Let's hope for a Happy Christmas and all good wishes for 2021. Stay safe, everyone

Daphne Chippendale

IRDSONGBIRDSONGBIRDSONG

Annual Church Raffle

We have decided to change our plans for the raffle again. We hope now to hold it early next year.

Meantime, we already have promises of some fantastic and new prizes.

This has been a challenging year for many village organisations, including your church. Thanks to the generosity of many of you and with a successful raffle, we hope, a year on from the start of the pandemic, that our income we will have been broadly speaking as planned.

In the midst of Covid and another interregnum, we are keeping positive and aim in 2021 to bounce back and meet more of the many and varied needs of our community.

Details of prizes and tickets will hopefully be delivered to you early next year. We would be most grateful for your support.

Thanks

Dick Withington



Warwickshire Police - November 2020 News

Extracted from Rugby Safer Neighbourhood Team Newsletter: no words have been changed, just a few omitted!



Welcome

Rugby Safer Neighbourhood team have made the decision to produce a joint newsletter covering all the areas that the team cover, from the town centre to the rural villages within Rugby.

What we have been up to...

- Drug taking/dealing
- Speeding
- Road Traffic Offences and Anti-Social Behaviour.....

Spotted by Chris Barney

IRDSONGBIRDSONGBIRDSONG

Thank you

A big Birdsong thank you to the very kind people who have recently made a very generous donation to help keep our village magazine going (you know who you are).

Birdsong is delivered free to every household in the village. Current and past editions can also be found on the village website. The only cost is the printing, and we rely on donations to make this possible.

The writing, drawing, proof reading and delivery are all done on a voluntary basis. I would therefore also like to thank those who contribute their time, creativity and energy to the magazine's production.

Lesley Fleming, Editor



Birdingbury Club Update

Well that was a year wasn't it? 2020, the year of the Covid hokey-cokey: in, out, open, closed, table service and takeaways; and sometimes it's felt like 'what it's all about' is anyone's guess.

It's been difficult for everyone and, from a Club point of view, especially for the hospitality sector -but the challenges have also come along with some unexpected and positive outcomes.

Trade, whilst we were able to open, has been remarkably good, with more people and more sales in some months this year than we experienced pre-Covid - but the financial detail is only half the story.



The Club has always been more than just a business. It's a community resource and the restrictions we've all faced this year have really enhanced that role. This has been through all sorts of things like the community drop in sessions in partnership with the church, supporting the church itself through our 'holy rolls', the takeaway food and drinks offer, the online events programme and all sorts of other things that we've got involved with or hosted across the year (and that almost always start with the words 'Ah, Tony, I'm glad I've seen you ...'!)

It's a business that has a bottom line in two different places. One measures the cash, as making enough money each year to be sustainable is really important; but the other measures how relevant, accessible, supporting and open we are to the community, which is equally (if not more) important.

We've always been aware of that, but I think this year has really seen that community role grow further and, going back to the hokey-cokey, the Club playing a key part in keeping the village socially connected is really what it's all about.

So, a massive end of the year thank you to everyone that's been involved with and helped with that, and let's hope that 2021 allows a bit more of it to be done face to face!

Tony Flint, President



IRDSONGBIRDSONGBIRDSONG

Shadows at Christmas

She tramped
The southern hills,
Singing her old song
Like a lantern
Made of sound.

The sharpness
Of widowcraft
Had bitten her face
And her hair
Was almost blue.

At nightfall
She stood
Where the path divided...

No longer alone
Listening,
As from before,
An orchestra
Of feathery tongues
Sang praiselessly
A small thunder
Pressing through
The empty air.

.....

'Make me no shadows,'
She said,
'For I have brought my own.'

Pilgrim

Birdingbury Calendar

Pop-up events are being organised on a week by week basis, so do keep checking the Facebook pages for Birdingbury Village and Birdingbury Club. The village website and notice board in the bus shelter will continue to capture community messages and information.

Date	Event	Time	Location
Saturday 28 November	Online Quiz: Around the World in 80 Questions	20.00	Club and Zoom
Friday 4 December	Pop up Indian food night	17.00 – 20.30	Club
Sunday 6 December	Christmas Service booking deadline	Midnight	c/o Jenny Hawes
Friday 11 th December	Pop up Mexican food night	17.00 – 20.30	Club
Saturday 12 December	Christmas Quiz	20.00	Club and Zoom
Friday 18 December	Pop up Hot Dog food night	17.00 – 20.30	Club
Saturday 16 th January	New Year's Quiz	20.00	Club and Zoom



Indian Spice Bar
Friday 4 December 2020
5pm – 8.30pm
Birdingbury Club
Main Street
Birdingbury CV23 8EL




Mexican Street Food Bar
Friday 11 December 2020
5pm – 8.30pm
Birdingbury Club
Main Street
Birdingbury CV23 8EL



Hot Dogs
Dirty Dogs
Friday 18 December 2020
5pm – 8.30pm
Birdingbury Club
Main Street
Birdingbury CV23 8EL



Birdsong Editor:

Lesley Fleming
Moonrakers, Back Lane Tel 632508
Email: birdsong1@btinternet.com

Church News Editor :

Vacant

Copy date for next issue – 18th January 2021